


# GET YOUR GOVERNANCE ON

Using Governance Processes to Mature a Campus Information Security Program

NEbraskaCERT Cyber Security Forum, March 17, 2021

Joanna Grama, JD, CISSP  
Vantage Technology Consulting Group



1

## TODAY'S AGENDA



MAJOR COMPONENTS OF A CAMPUS INFOSEC PROGRAM



MEASURING DEPLOYMENT AND MATURITY



MOVING FORWARD USING GOVERNANCE PROCESSES

2



CAMPUS  
INFORMATION  
SECURITY  
PROGRAM  
ELEMENTS

---

Governance & Strategy

---

Management

---

Policy & Compliance

---

Awareness & Training


---

Services & Operations

3



GOVERNANCE & STRATEGY



LEADER WITH INSTITUTION-WIDE RESPONSIBILITY & AUTHORITY



WRITTEN STRATEGY



SUCCESS METRICS



SHARED RESPONSIBILITY

4


# MANAGEMENT



- RISK ANALYSIS & MANAGEMENT
- ASSET PROTECTION
- IDENTITY MANAGEMENT
- INCIDENT RESPONSE
- BUSINESS CONTINUITY
- STAFFING

5


# POLICY & COMPLIANCE




- WRITTEN INFOSEC POLICIES
- UNIFIED COMPLIANCE
- FRAMEWORK BASED
- VALIDATION
- EXCEPTIONS

6


## AWARENESS & TRAINING




STAFF &  
FACULTY



STUDENTS




THIRD PARTIES




PRIVILEGED  
ACCESS

7


## SERVICES & OPERATIONS




IDENTIFY




PROTECT



DETECT

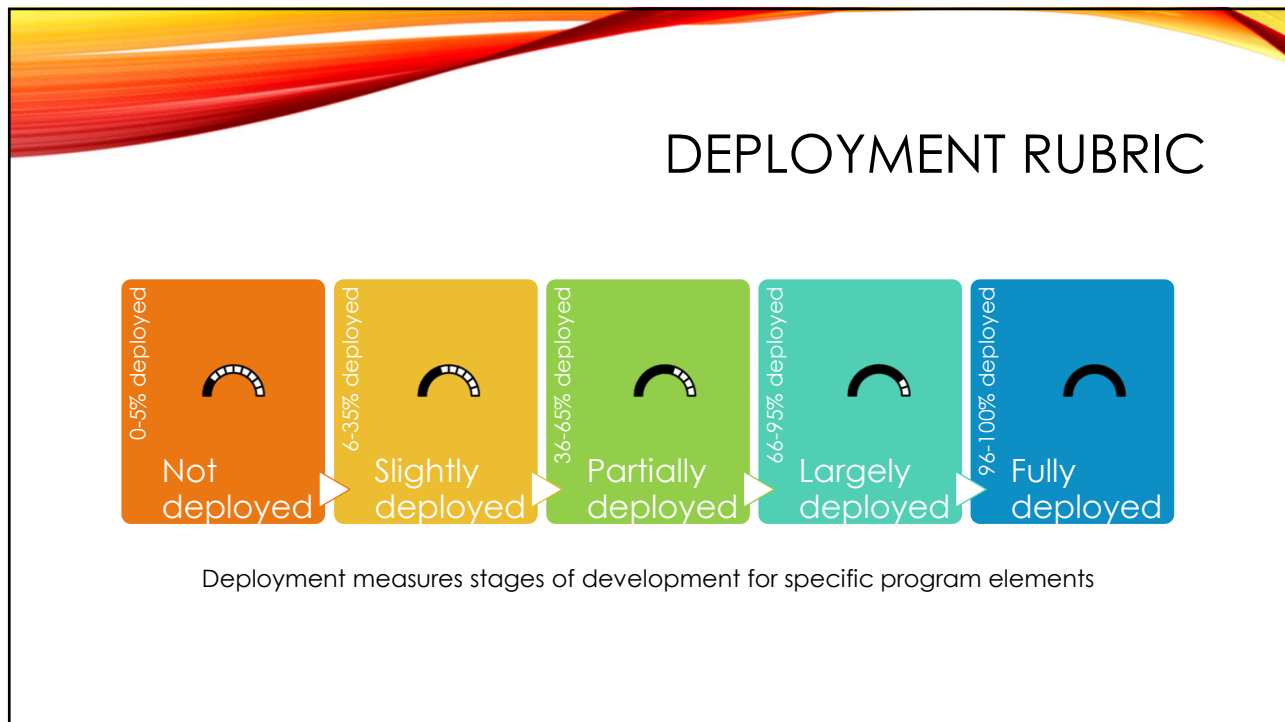


RESPOND

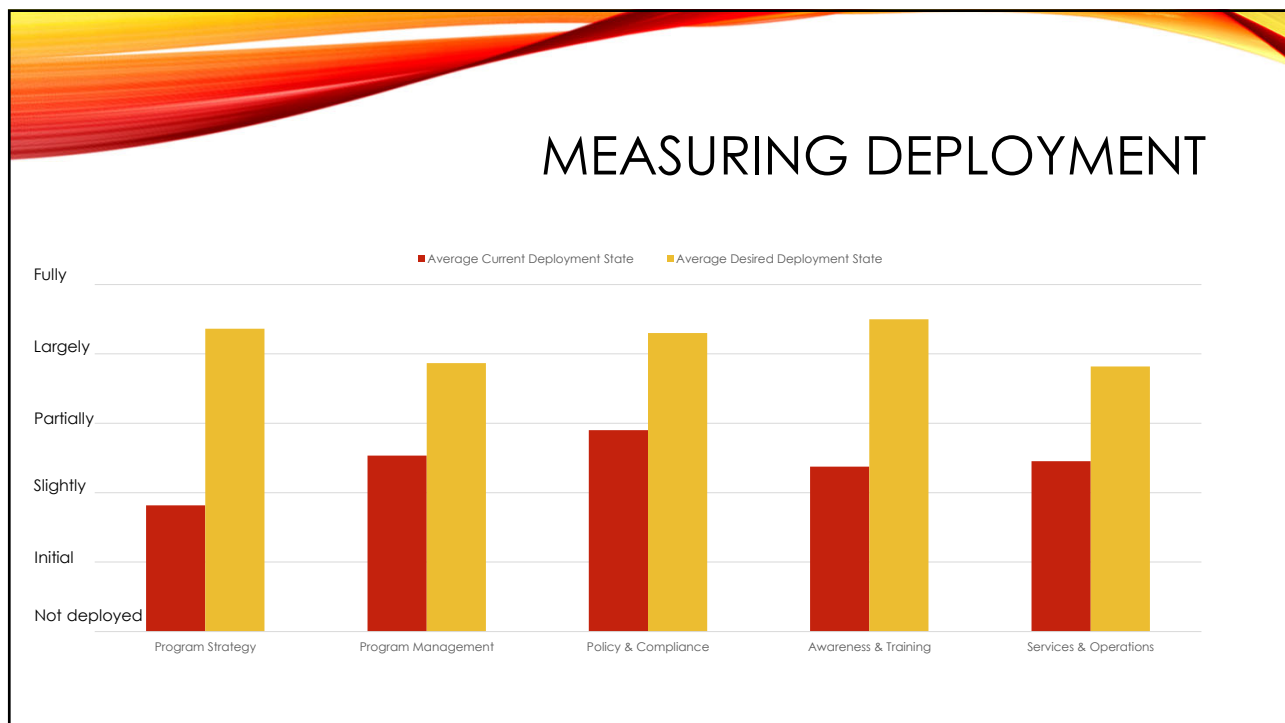


RECOVER

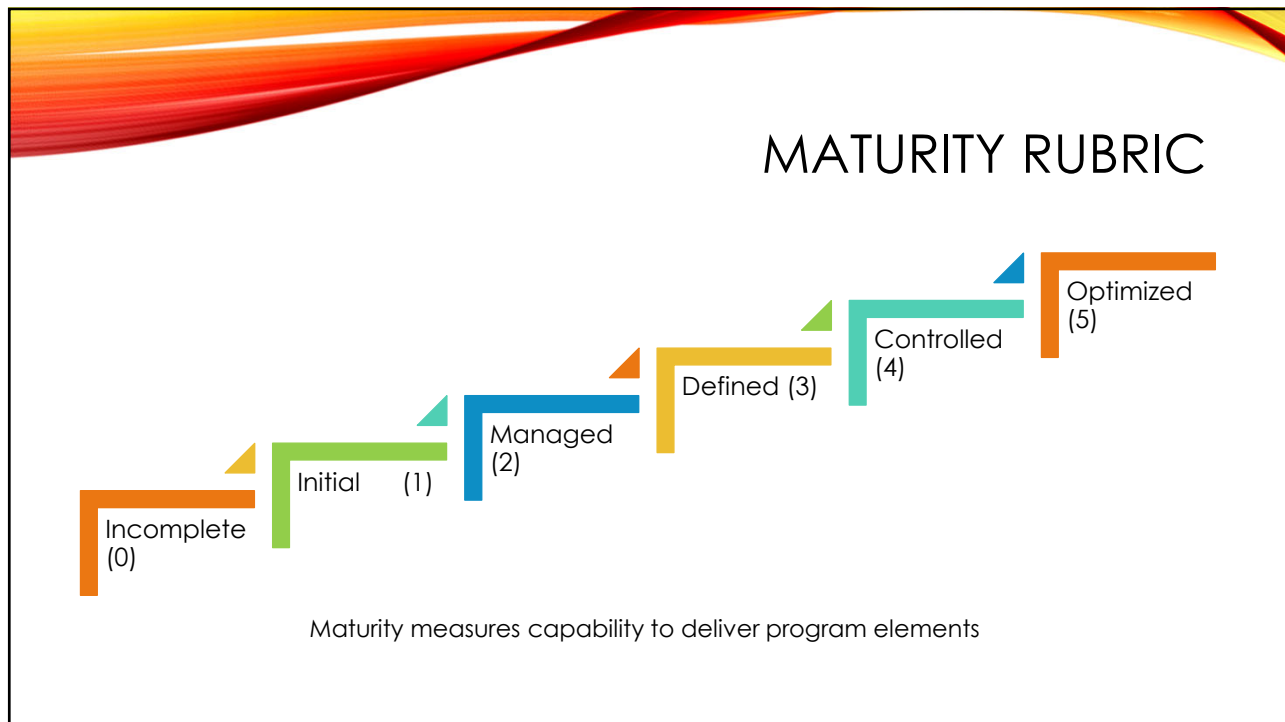
8



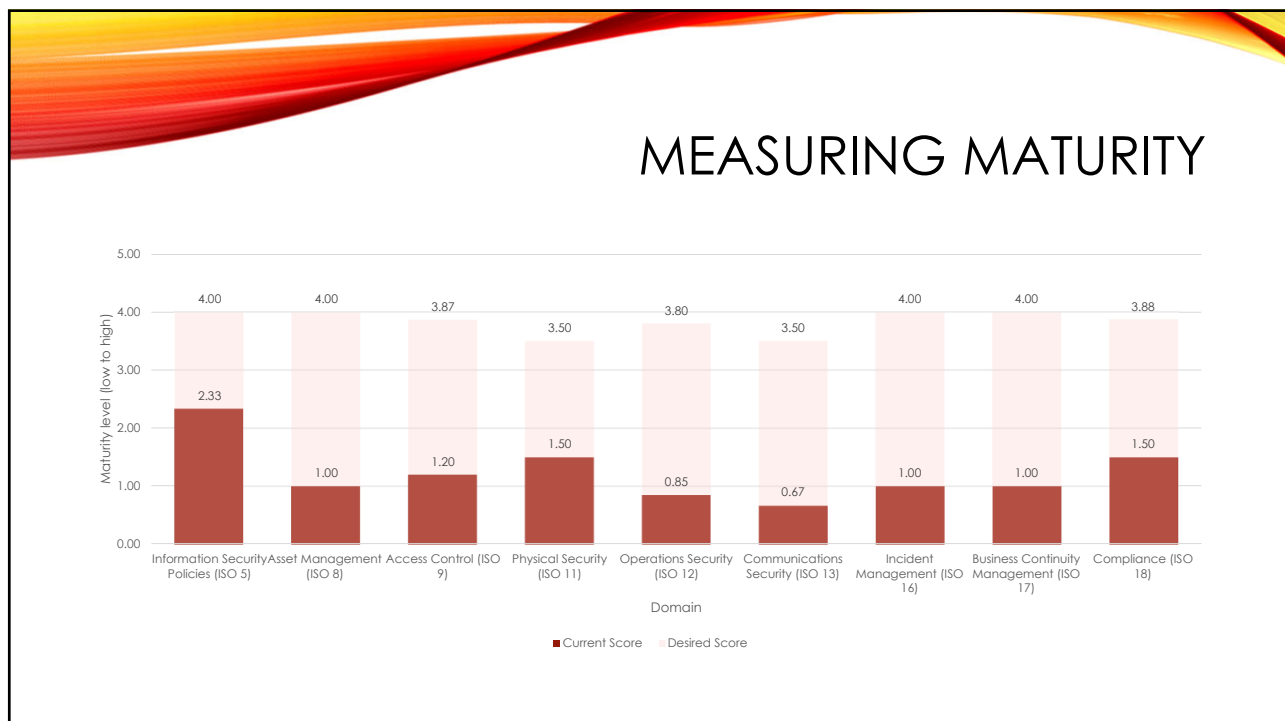
9



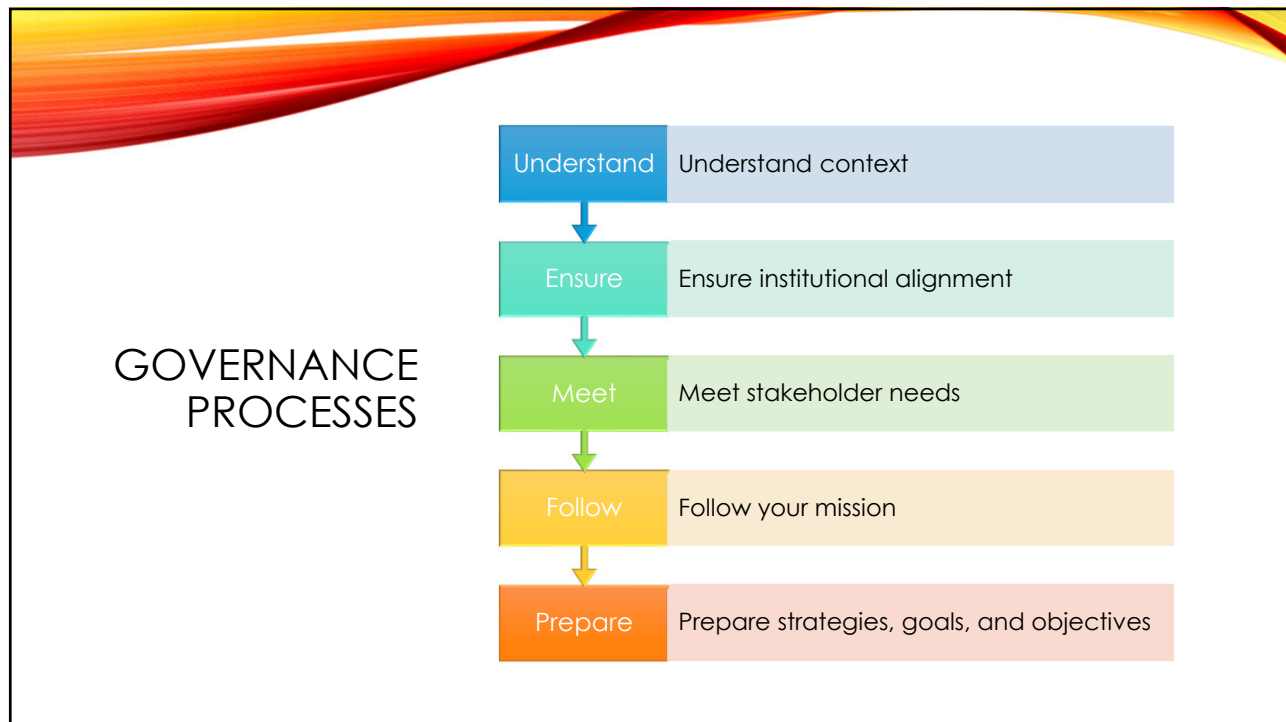
10



11



12



13

## UNDERSTANDING CONTEXT

Characteristic	Dependency
Dependence on information technology systems and the Internet to conduct academic, research, and outreach programs and offer support services	Very high
Impact of major IT system downtime on operations	Very high
Dependency of multinational and multisite operations	Very high
Plans for multinational and multisite operations (outsourced business functions, multiple campus locations, new research collaborations, student enrollment overseas)	Very high
Impact to college from an Internet outage	Somewhat high
The sensitivity of stakeholders to privacy	Somewhat high
The sensitivity of stakeholders to security	Somewhat high
Value of college intellectual property stored or transmitted in electronic form	Moderate
Level of regulation regarding security	Moderate
Potential impact on reputation of a security incident	Moderate
Impact to national or critical infrastructure in case of outage or compromise to college systems	Very low

14

## INSTITUTIONAL ALIGNMENT



- How do you include information security planning in your overall campus strategic planning process?
- How do your institution's information security strategies support your campus strategic objectives?
- Do your campus leaders have roles and responsibilities with respect to campus information security?

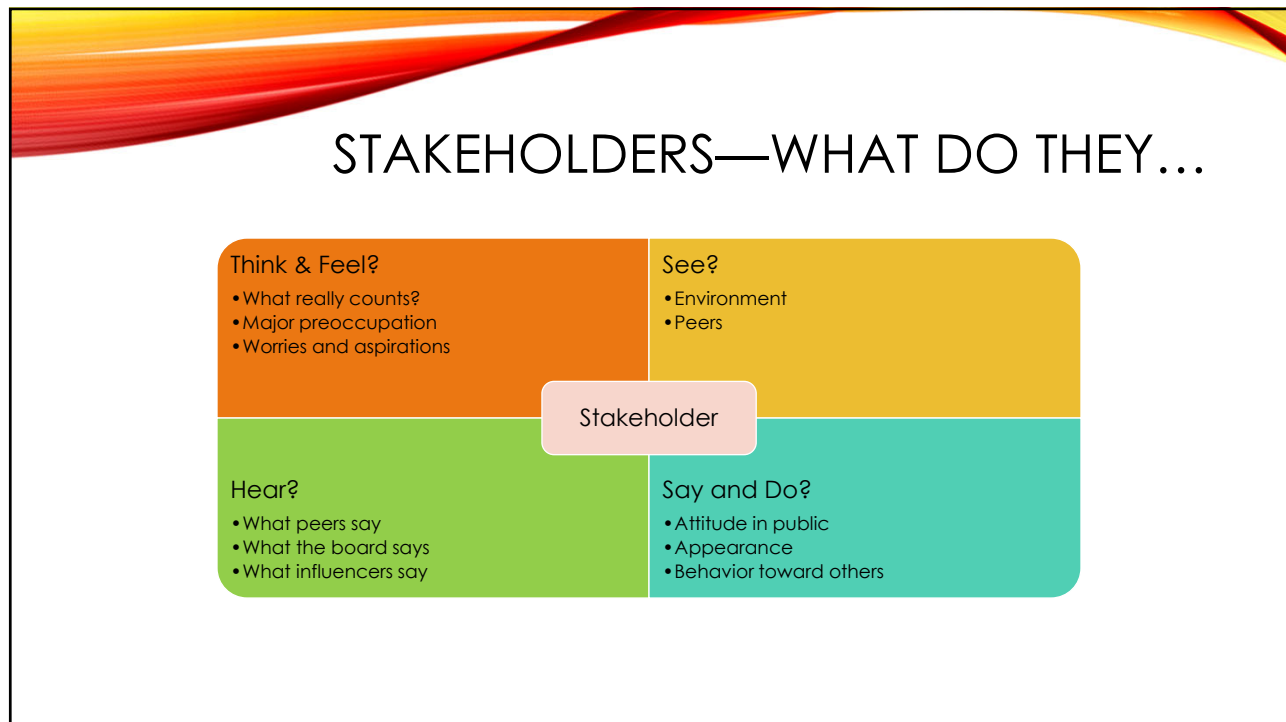
15

## STAKEHOLDERS

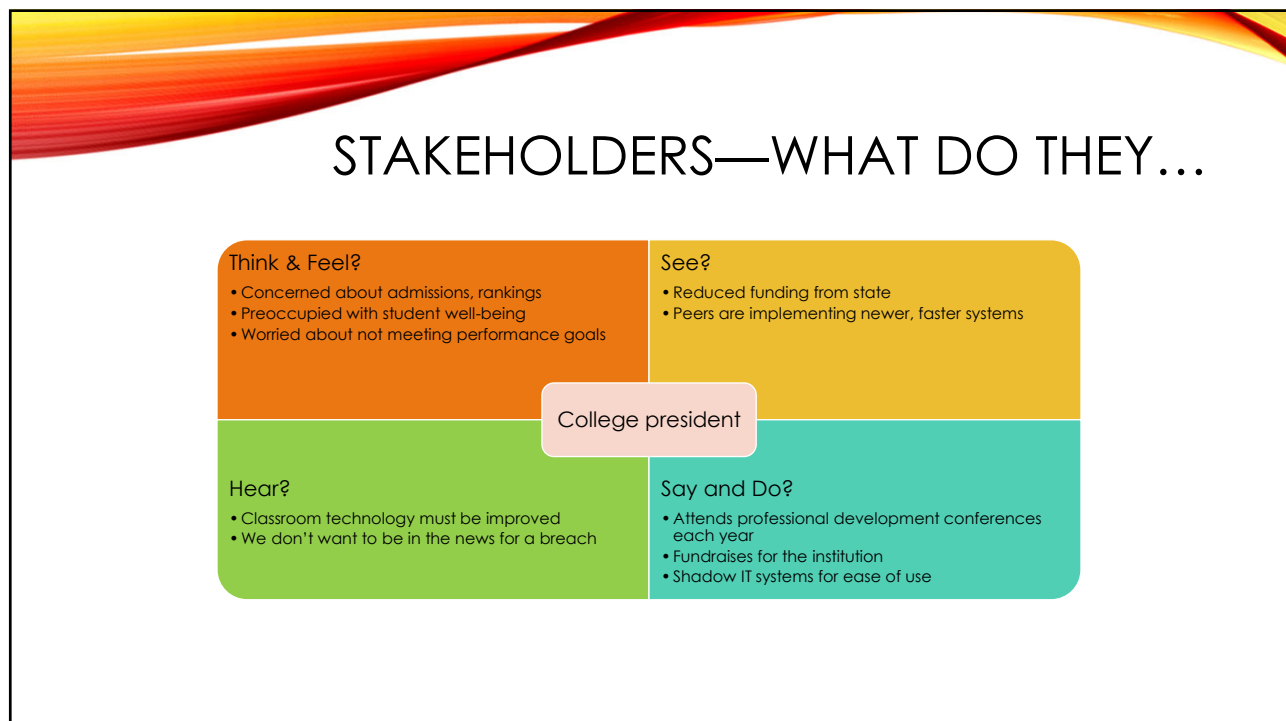
- Who are they?
- Understand their motivations
- Understand their concerns
- Understand what you can do to mitigate their concerns

16





17



18



19

## MISSION IMPOSSIBLE

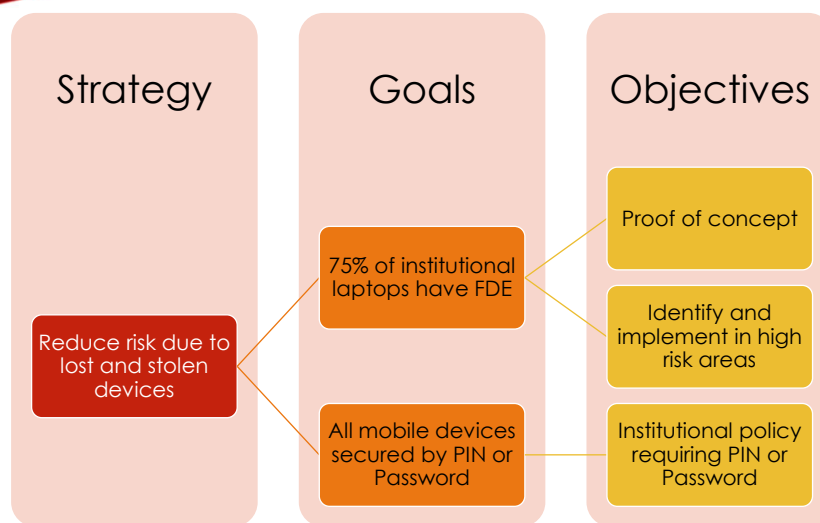
The IT department will strive to protect the confidentiality, integrity, and availability of institutional information, as well as reduce the risk of information exposure, to ensure that the College can meet its missions of educating tomorrow's leaders, conducting global research and fostering community engagement.

20

## MISSION IMPOSSIBLE

The IT department enables the College to educate, research, and connect by protecting our most important institutional data.

21



22

THANK YOU!

Joanna Grama, JD, CISSP  
Vantage Technology Consulting Group  
[www.VantageTCG.com](http://www.VantageTCG.com)  
 @runforserenity

**VANTAGE**  
Technology Consulting Group